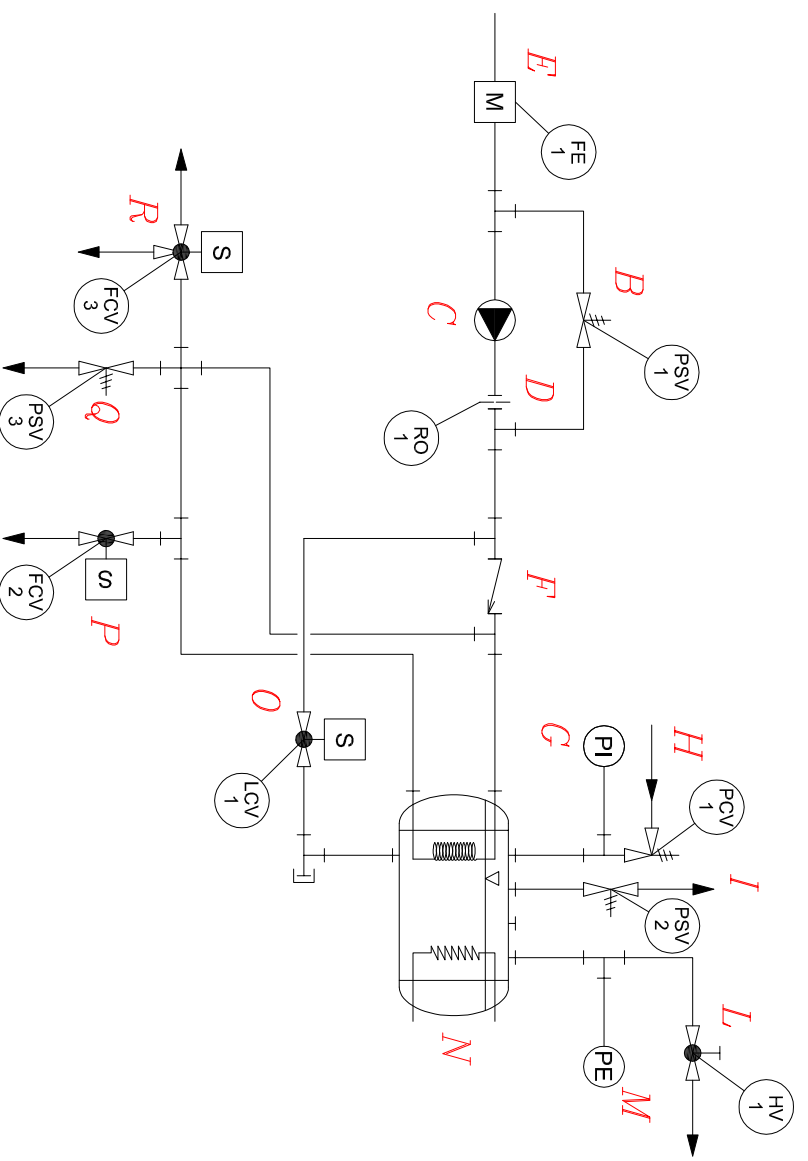


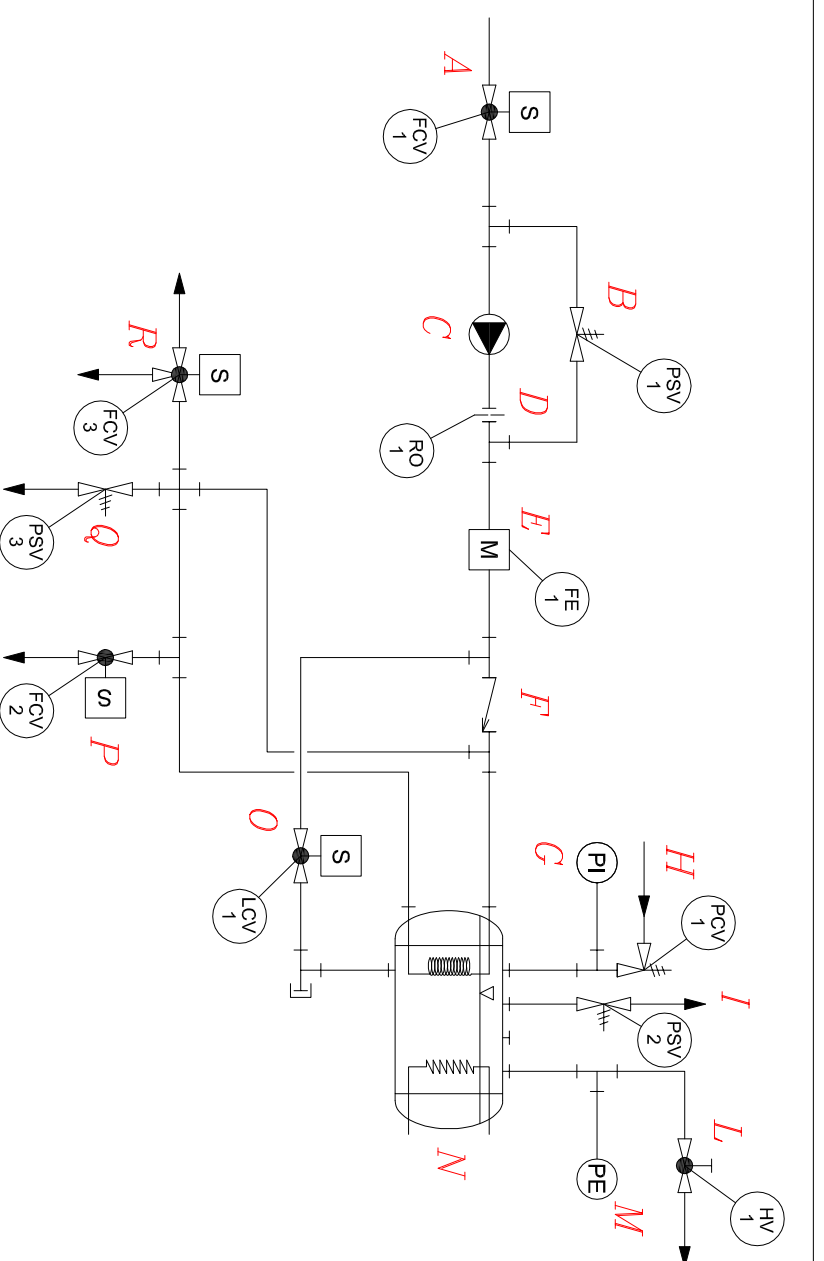
Hydraulic diagram Musica Silent (mains)

- A Water inlet valve
- B By-pass valve
- C Pump
- D Restricted orifice
- E Flowmeter
- F One-way valve
- G Pressure gauge
- H Anti vacuum valve
- I Pressure safety valve
- L Steam valve
- M Pressure switch
- N Boiler
- O Water level valve
- P Hot water valve
- Q Pressure safety valve (coffee circuit)
- R Pouring group valve



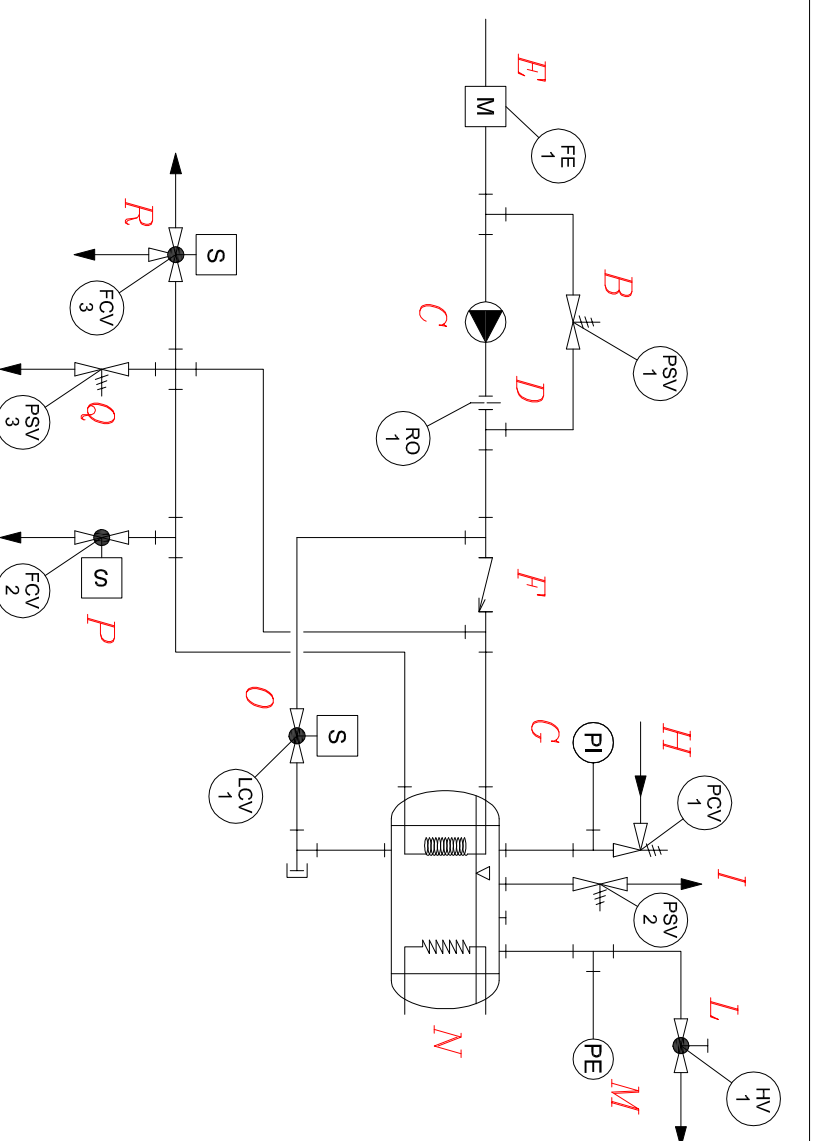
Hydraulic diagram Musica Silent (tank)

- B By-pass valve
- C Pump
- D Restricted orifice
- E Flowmeter
- F One-way valve
- G Pressure gauge
- H Anti vacuum valve
- I Pressure safety valve
- L Steam valve
- M Pressure switch
- N Boiler
- O Water level valve
- P Hot water valve
- Q Pressure safety valve (coffee circuit)
- R Pouring group valve



Schema funzionale Musica Silent attacco diretto

- A Valvola alimentazione acqua
- B Valvola by-pass
- C Pompa
- D Orifizio calibrato
- E Flussometro
- F Valvola di non ritorno
- G Manometro
- H Valvola attivuoto
- I Valvola di sicurezza
- L Valvola vapore
- M Pressostato
- N Caldaia
- O Valvola autolivello
- P Valvola acqua calda
- Q Valvola max pressione circuito caffè
- R Valvola erogazione



Schema funzionale Musica Silent con tanica

- B Valvola by-pass
- C Pompa
- D Orifizio calibrato
- E Flussometro
- F Valvola di non ritorno
- G Manometro
- H Valvola attivuoto
- I Valvola di sicurezza
- L Valvola vapore
- M Pressostato
- N Caldaia
- O Valvola autolivello
- P Valvola acqua calda
- Q Valvola max pressione circuito caffè
- R Valvola erogazione